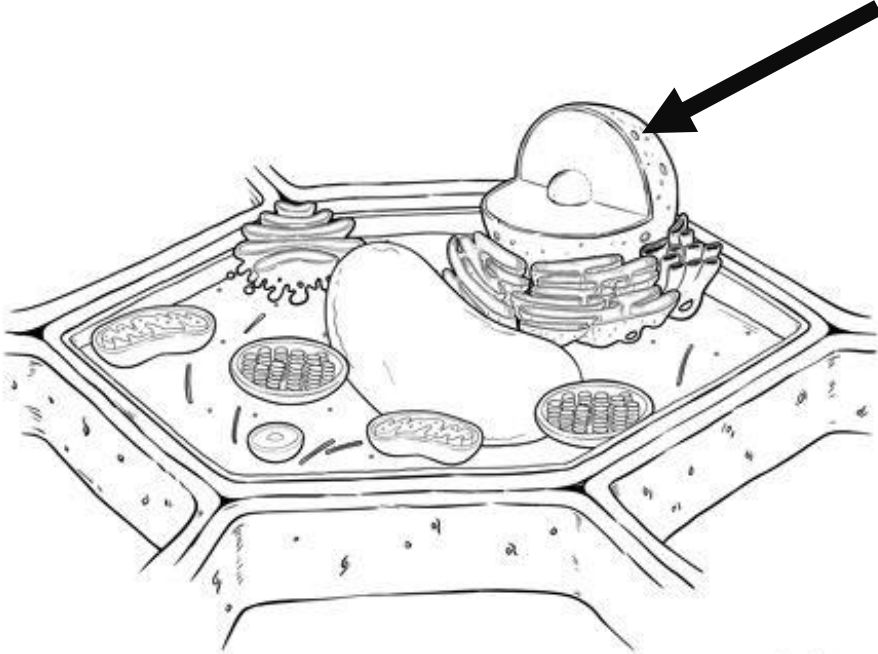
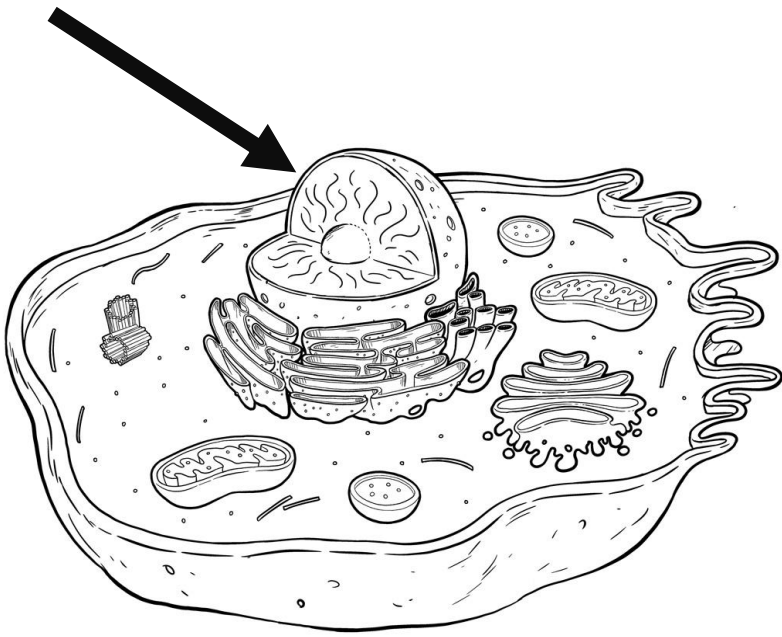


Nucleus (holds DNA; controls the cell)

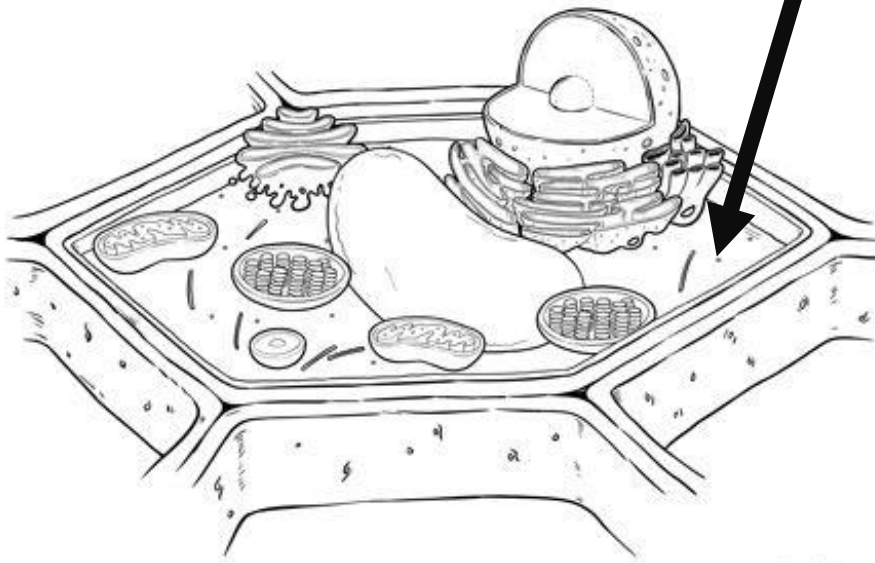


[www.fimvandevall.com](http://www.fimvandevall.com)  
Plant Cell Diagram - Copyright © Dutch Renaissance Press LLC

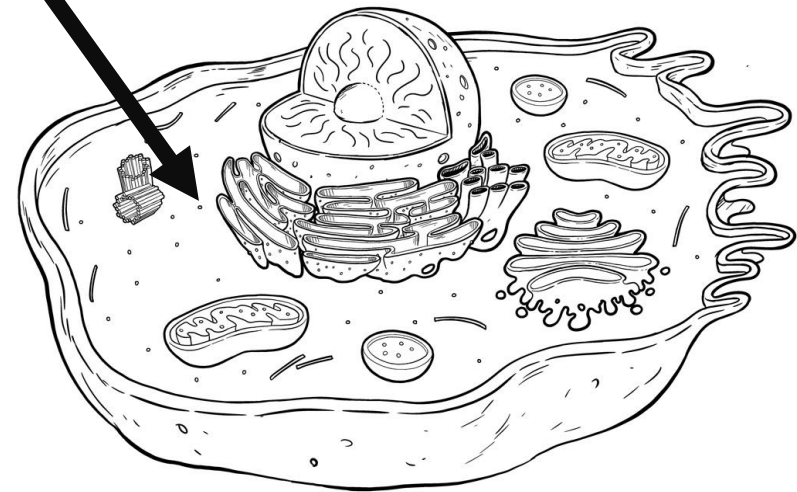


[www.fimvandevall.com](http://www.fimvandevall.com)  
Animal Cell Diagram - Copyright © Dutch Renaissance Press LLC

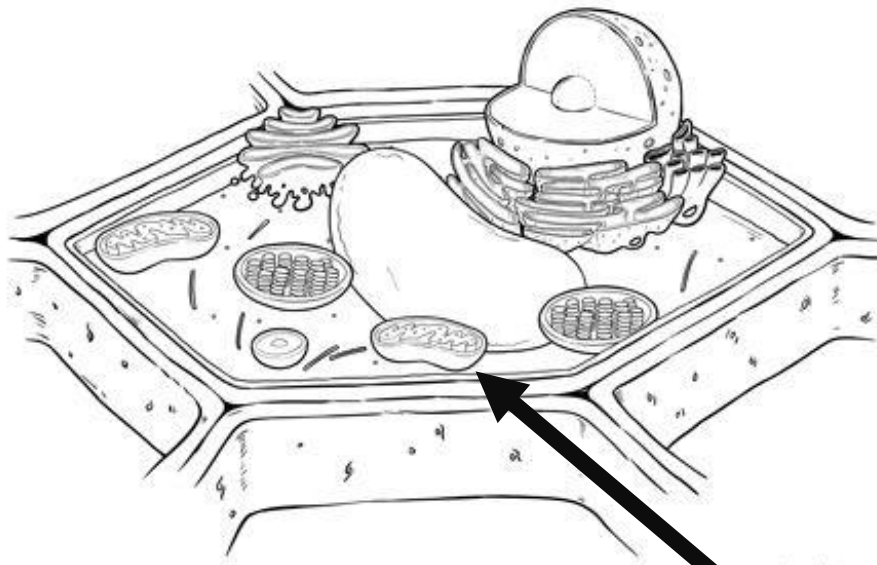
# Ribosomes (makes proteins)



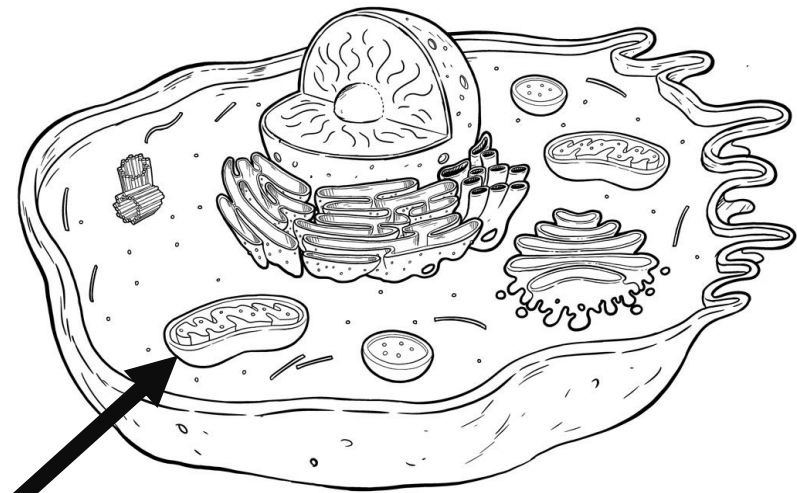
[www.fimvandevall.com](http://www.fimvandevall.com)  
Plant Cell Diagram - Copyright © Dutch Renaissance Press LLC



[www.fimvandevall.com](http://www.fimvandevall.com)  
Animal Cell Diagram - Copyright © Dutch Renaissance Press LLC



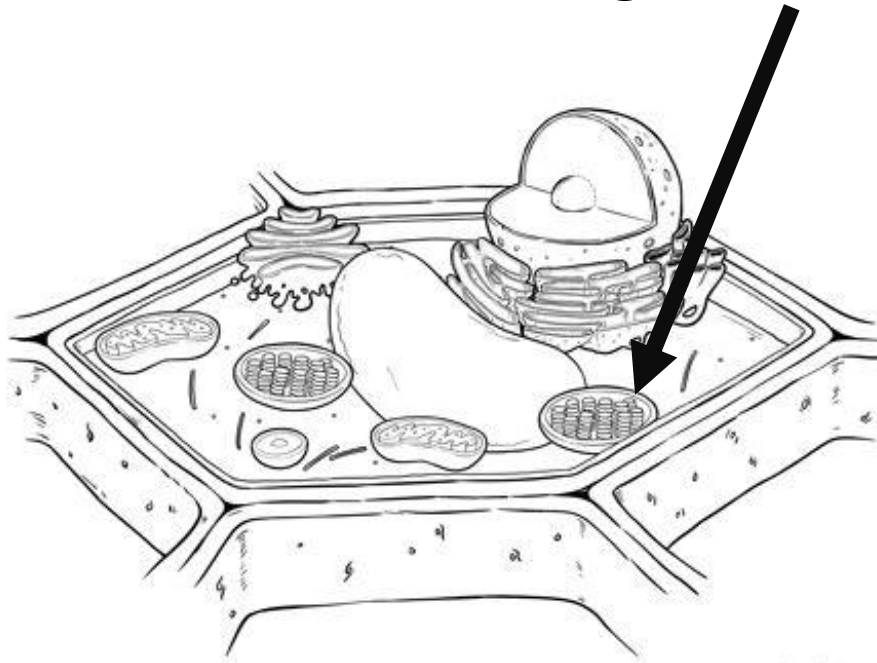
Plant Cell Diagram - Copyright © Dutch Renaissance Press LLC



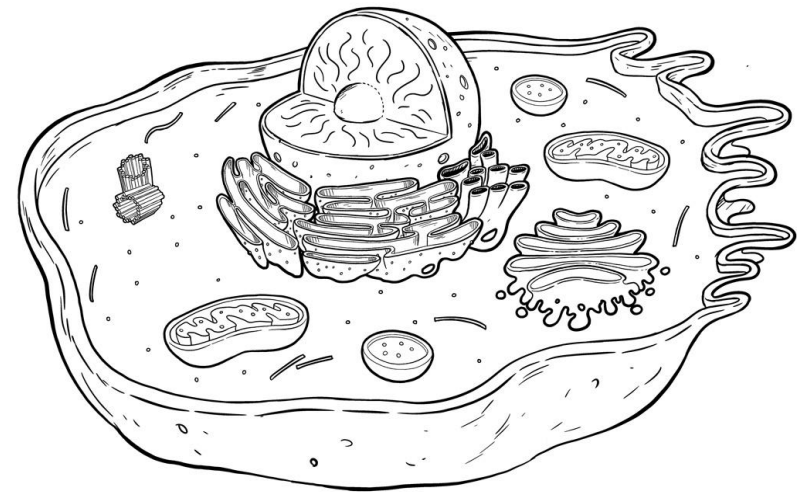
Animal Cell Diagram - Copyright © Dutch Renaissance Press LLC

Mitochondria (turns food into useable energy for the cell)

Chloroplast (site of photosynthesis-  
turns light into food)

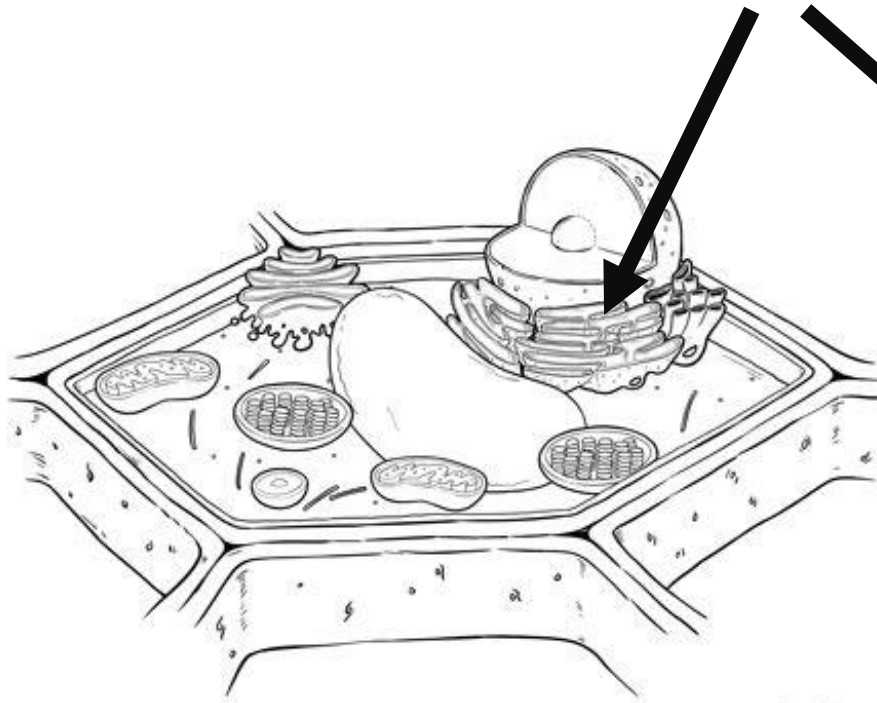


[www.fimvandevall.com](http://www.fimvandevall.com)  
Plant Cell Diagram - Copyright © Dutch Renaissance Press LLC

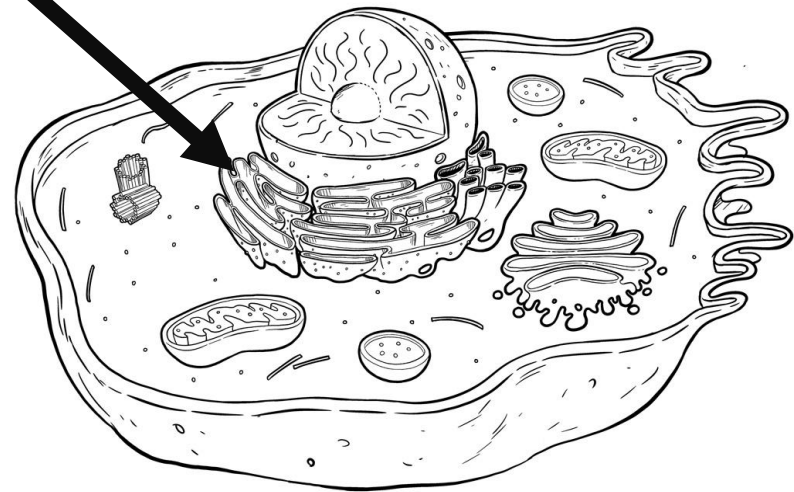


[www.fimvandevall.com](http://www.fimvandevall.com)  
Animal Cell Diagram - Copyright © Dutch Renaissance Press LLC

# Endoplasmic Reticulum (makes and transports materials through the cell)

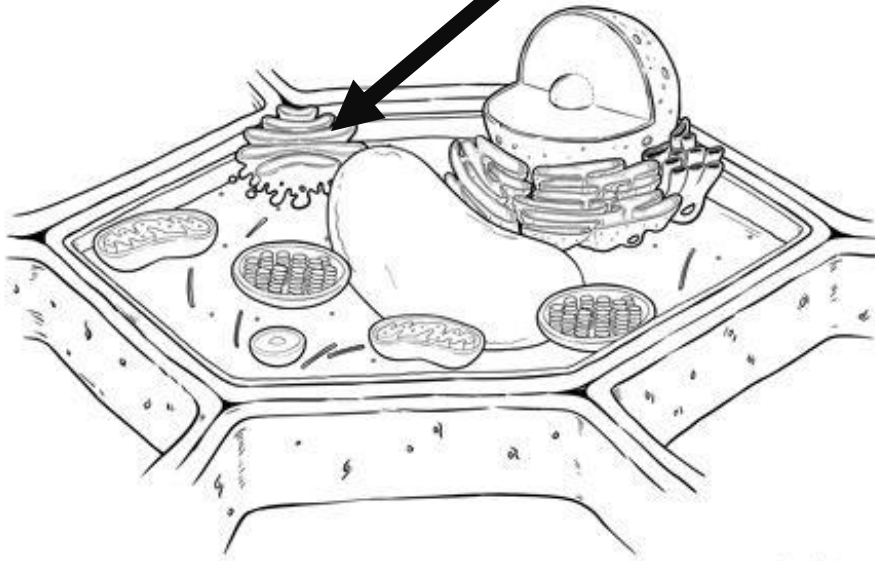


[www.fimvandevall.com](http://www.fimvandevall.com)  
Plant Cell Diagram - Copyright © Dutch Renaissance Press LLC

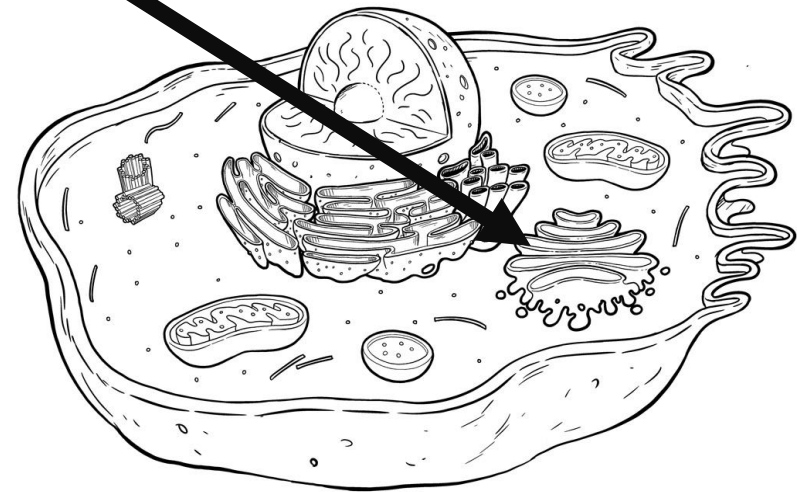


[www.fimvandevall.com](http://www.fimvandevall.com)  
Animal Cell Diagram - Copyright © Dutch Renaissance Press LLC

# Golgi Body (packages chemicals for cell export)

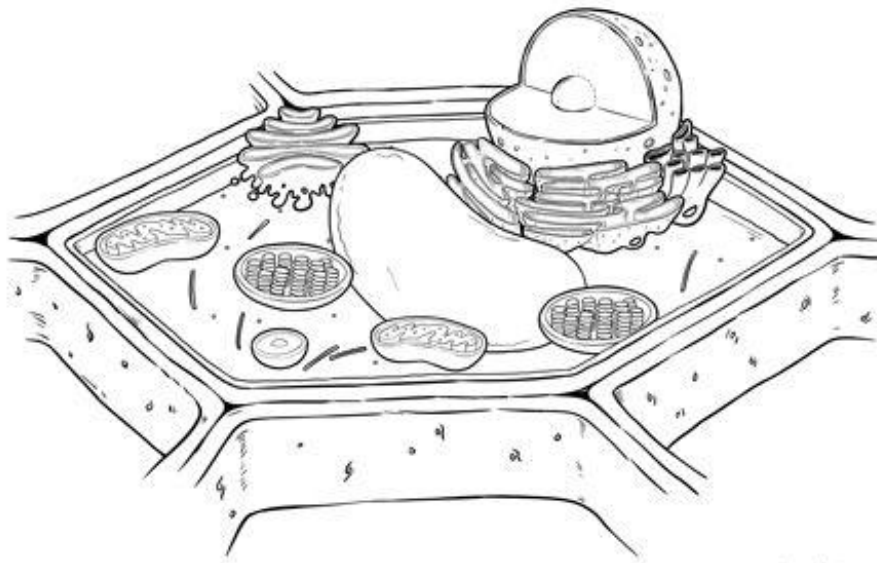


[www.fimvandevall.com](http://www.fimvandevall.com)  
Plant Cell Diagram - Copyright © Dutch Renaissance Press LLC

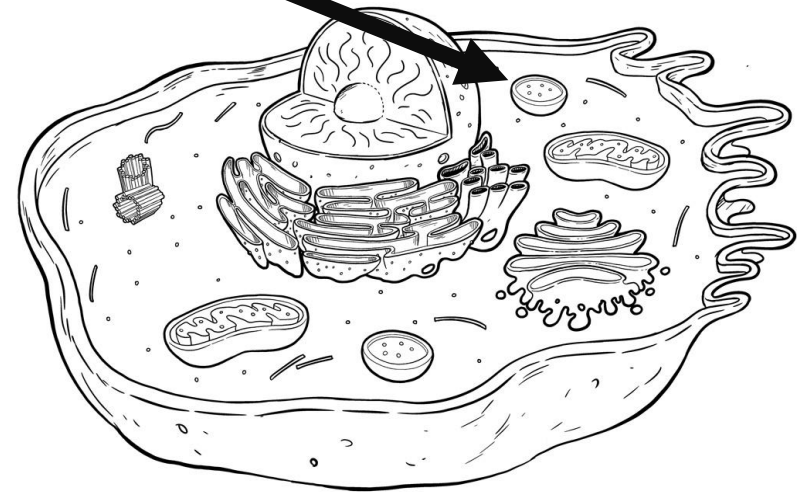


[www.fimvandevall.com](http://www.fimvandevall.com)  
Animal Cell Diagram - Copyright © Dutch Renaissance Press LLC

# Lysosome (contains digestive enzymes)

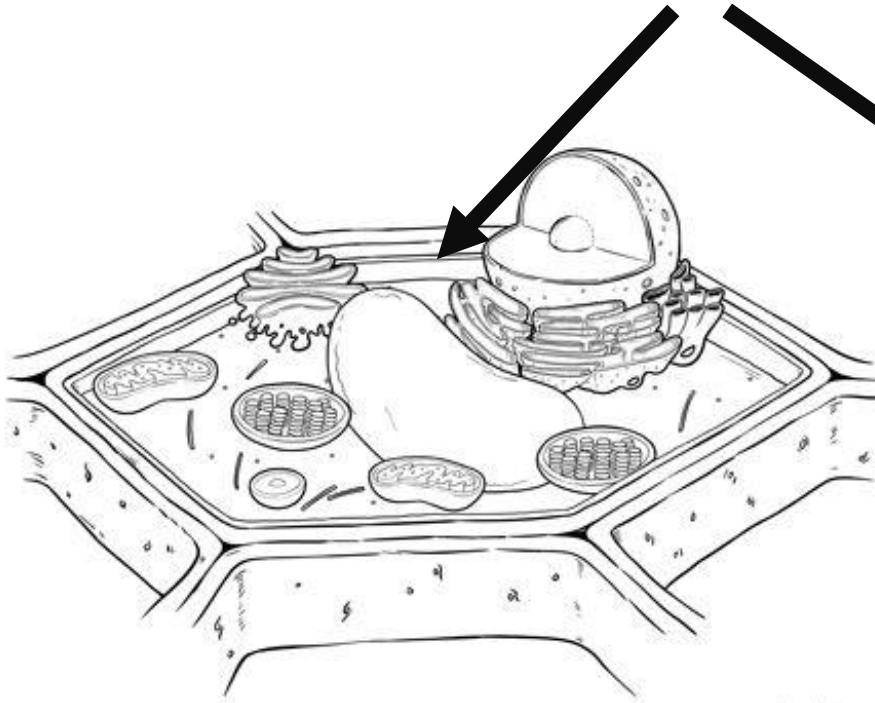


[www.fimvandevall.com](http://www.fimvandevall.com)  
Plant Cell Diagram - Copyright © Dutch Renaissance Press LLC

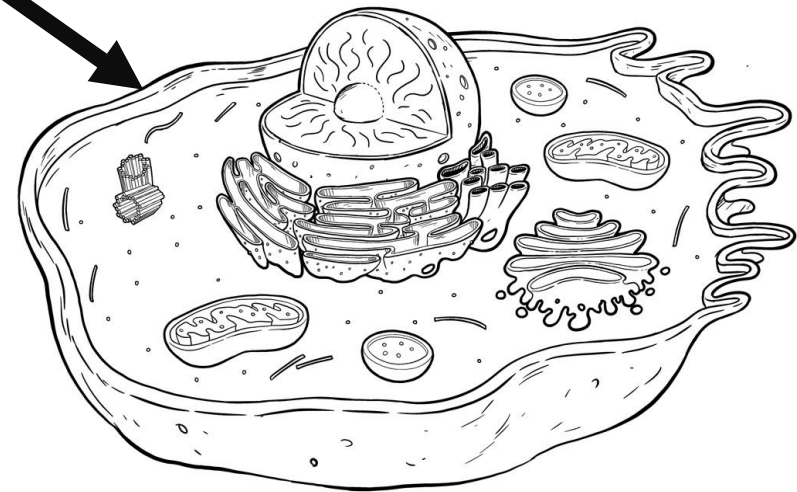


[www.fimvandevall.com](http://www.fimvandevall.com)  
Animal Cell Diagram - Copyright © Dutch Renaissance Press LLC

# Cell Membrane (controls what enters and leaves the cell)



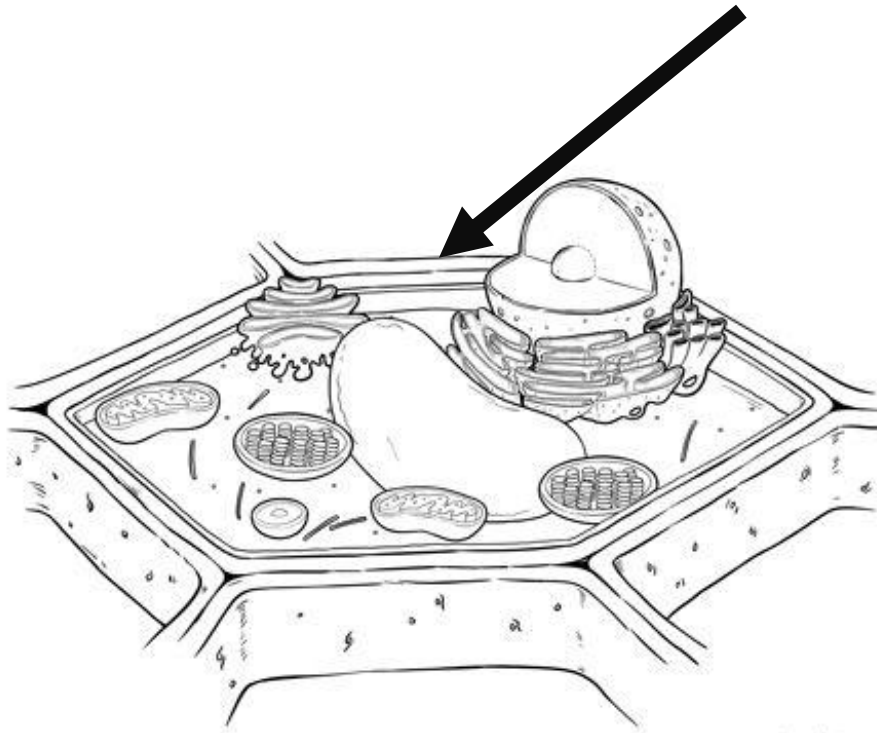
[www.fimvandevall.com](http://www.fimvandevall.com)  
Plant Cell Diagram - Copyright © Dutch Renaissance Press LLC



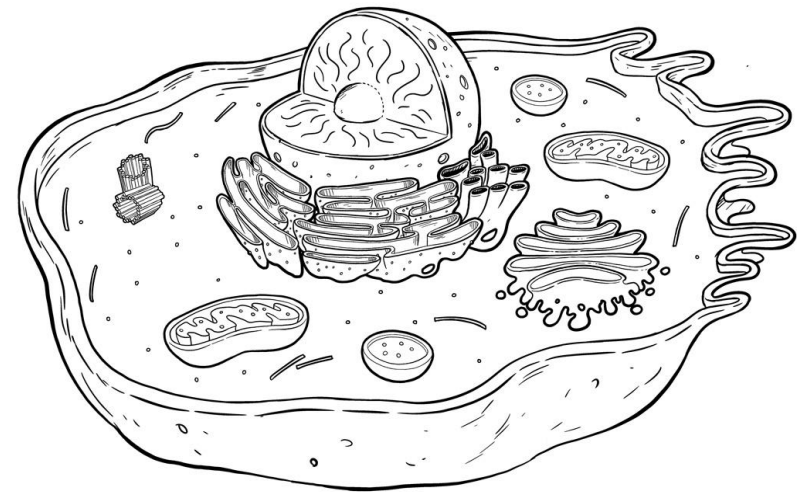
[www.fimvandevall.com](http://www.fimvandevall.com)  
Animal Cell Diagram - Copyright © Dutch Renaissance Press LLC



# Cell Wall (provides support and protection)

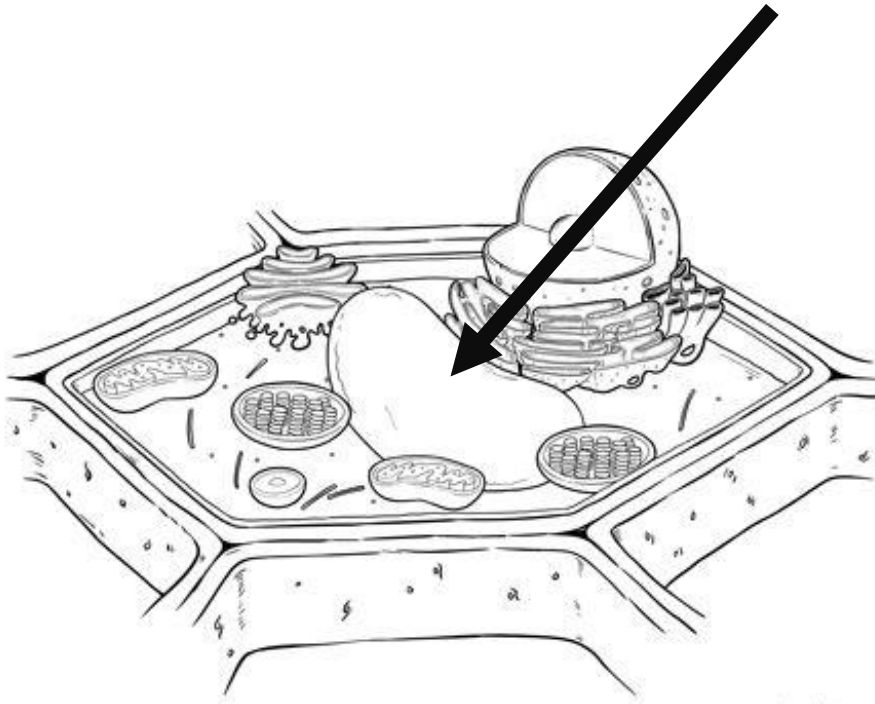


[www.fimvandevall.com](http://www.fimvandevall.com)  
Plant Cell Diagram - Copyright © Dutch Renaissance Press LLC

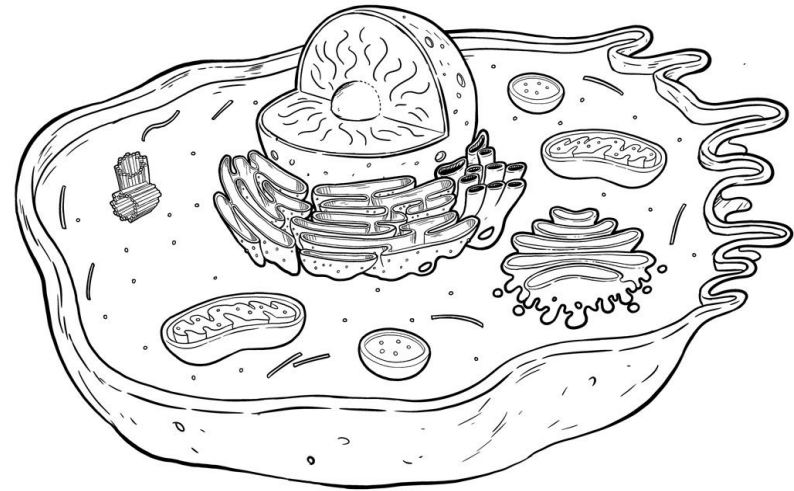


[www.fimvandevall.com](http://www.fimvandevall.com)  
Animal Cell Diagram - Copyright © Dutch Renaissance Press LLC

Vacuole (stores food, water, and waste)

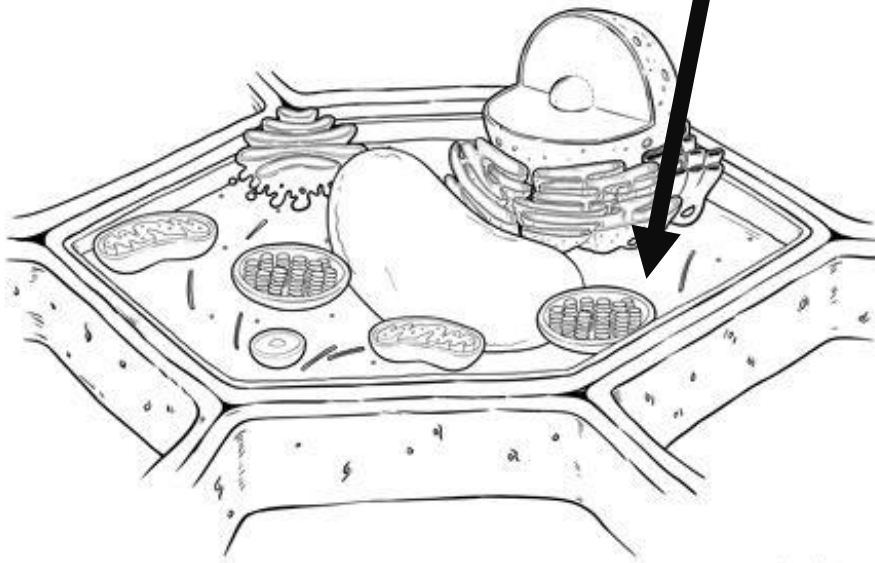


[www.fimvandevall.com](http://www.fimvandevall.com)  
Plant Cell Diagram - Copyright © Dutch Renaissance Press LLC

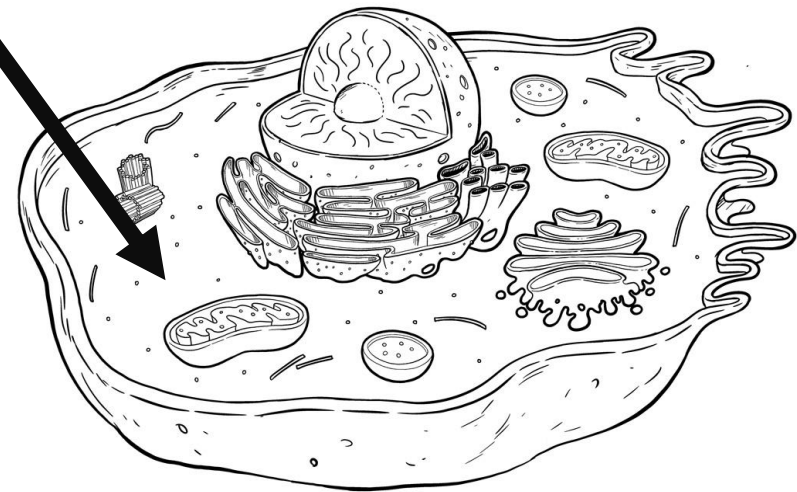


[www.fimvandevall.com](http://www.fimvandevall.com)  
Animal Cell Diagram - Copyright © Dutch Renaissance Press LLC

Cytoplasm (jelly—like substance that holds organelles in place)

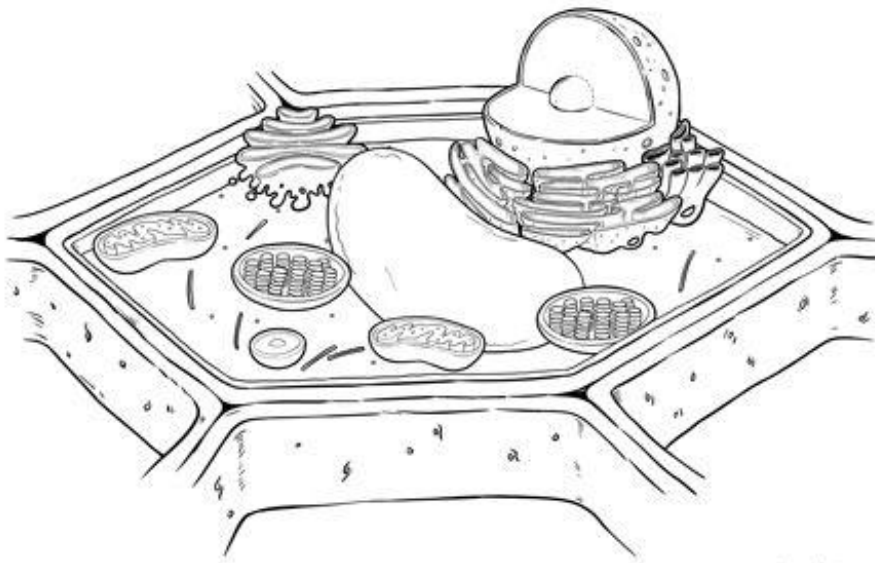


[www.fimvandevall.com](http://www.fimvandevall.com)  
Plant Cell Diagram - Copyright © Dutch Renaissance Press LLC

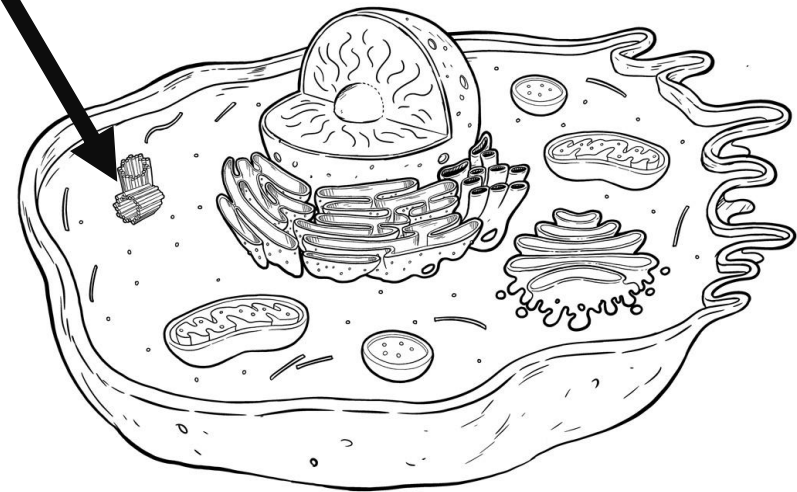


[www.fimvandevall.com](http://www.fimvandevall.com)  
Animal Cell Diagram - Copyright © Dutch Renaissance Press LLC

Centriole (controls chromosome movement during cell division)

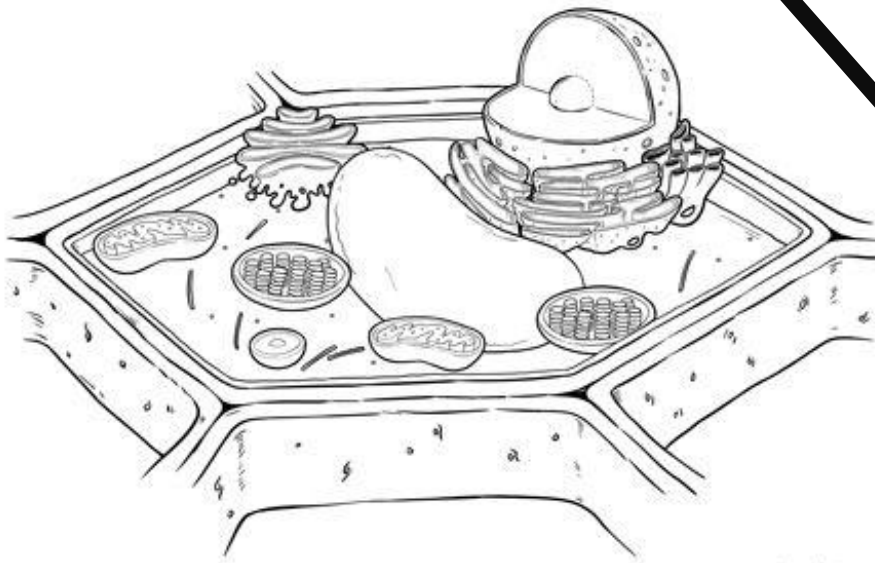


[www.fimvandevall.com](http://www.fimvandevall.com)  
Plant Cell Diagram - Copyright © Dutch Renaissance Press LLC

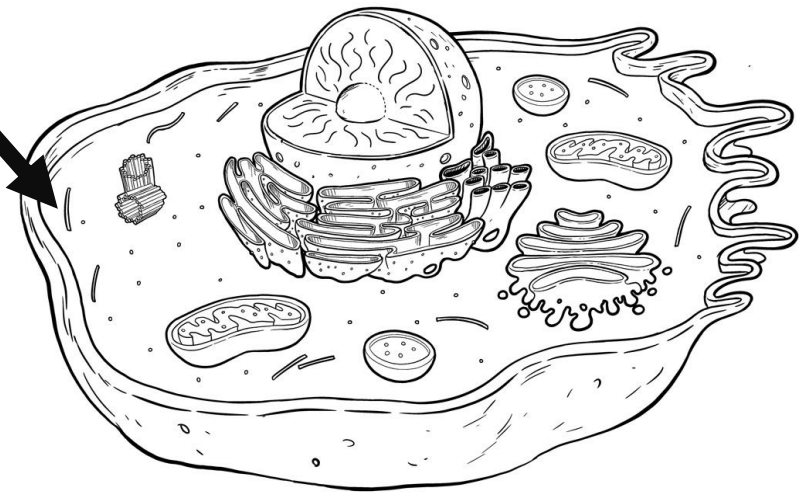


[www.fimvandevall.com](http://www.fimvandevall.com)  
Animal Cell Diagram - Copyright © Dutch Renaissance Press LLC

# Cytoskeleton (provides support and structure)



[www.fimvandevall.com](http://www.fimvandevall.com)  
Plant Cell Diagram - Copyright © Dutch Renaissance Press LLC



[www.fimvandevall.com](http://www.fimvandevall.com)  
Animal Cell Diagram - Copyright © Dutch Renaissance Press LLC