

Name _____ Block _____ Date _____

Notes – Why are cells small? (SA:V Ratio)

Surface area _____

Volume _____

Surface Area : Volume Ratio _____

A cell's SA _____

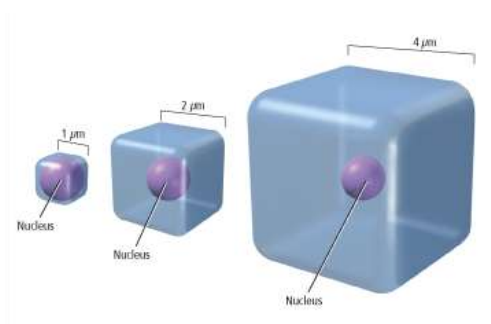
A cell's V _____

A cell benefits from having a...

- _____
- _____

So cells must have a _____

This means _____

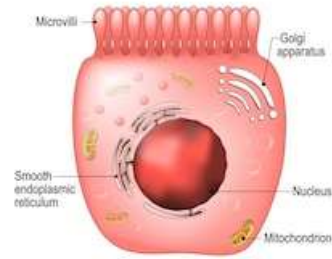


If a cell becomes extremely large...

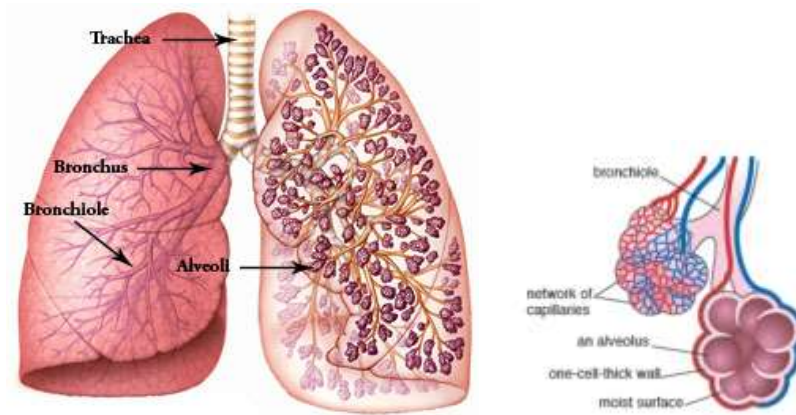
- _____
- _____
- _____

Some cells are specialized to _____

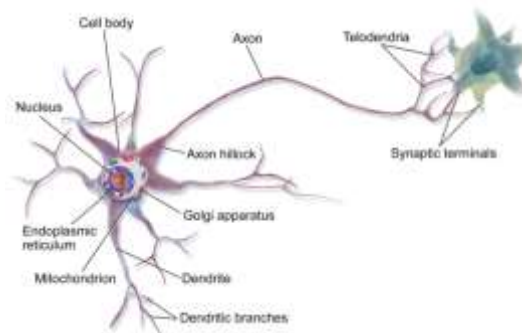
- Intestines _____



- Lungs _____



- Neurons _____



- Capillaries _____

