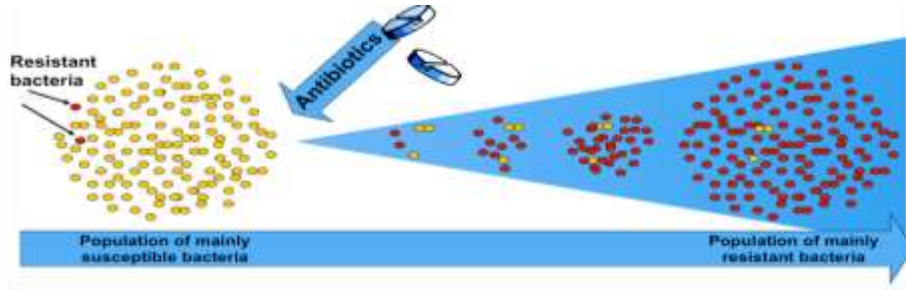
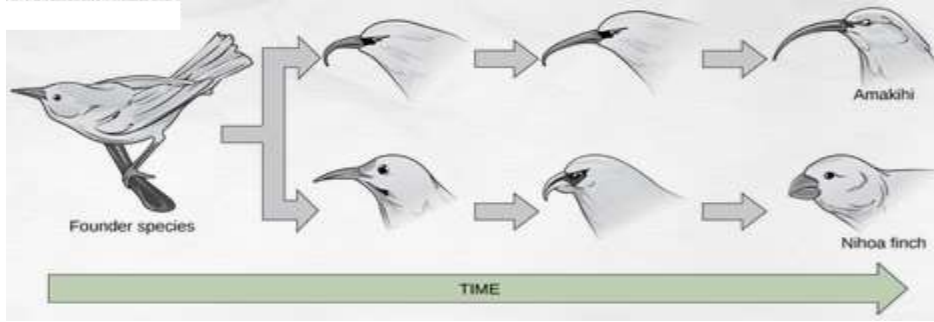


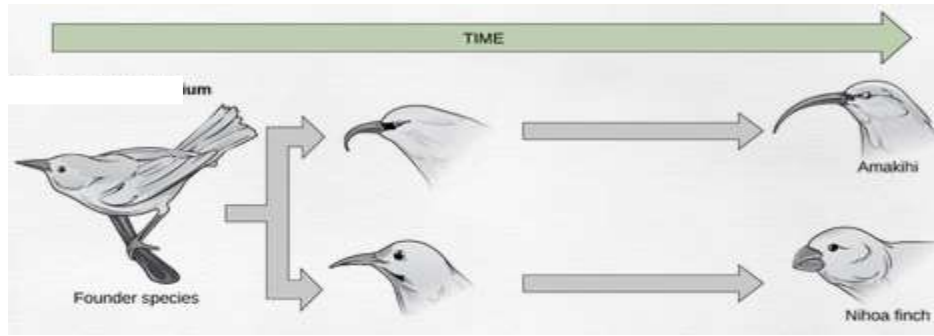
Natural Selection



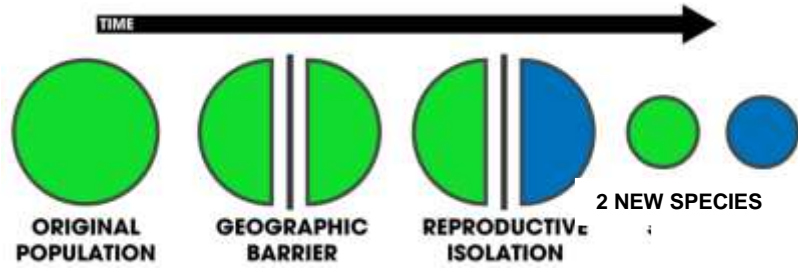
Gradualism



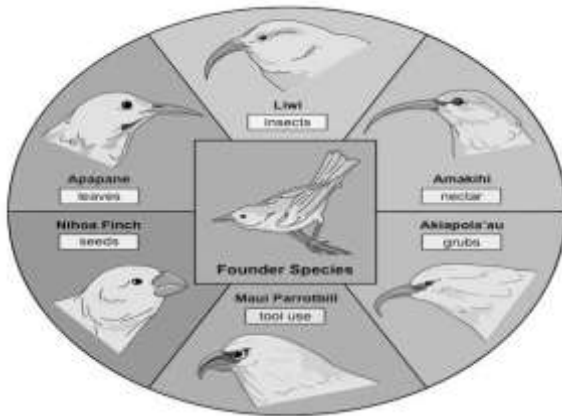
Punctuated Equilibrium



Speciation

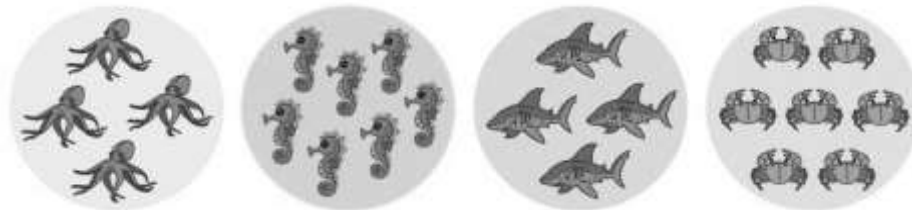


Adaptive radiation

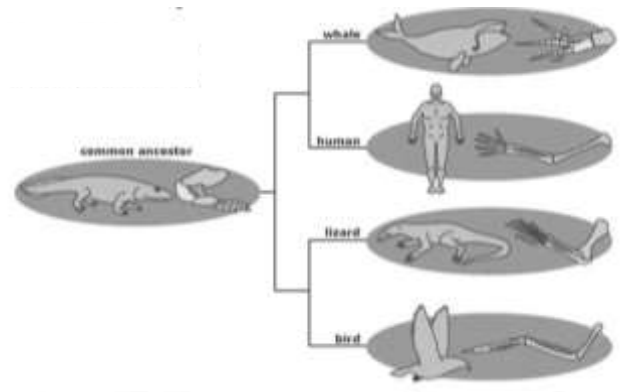


Population

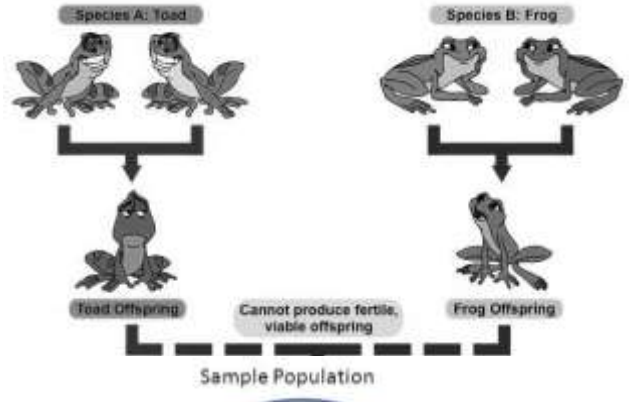
A group of organisms of the same species, living in the same area at the same time



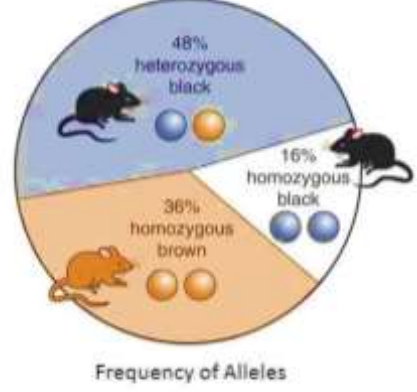
Divergent Evolution



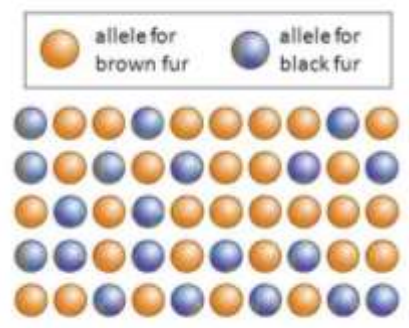
Species



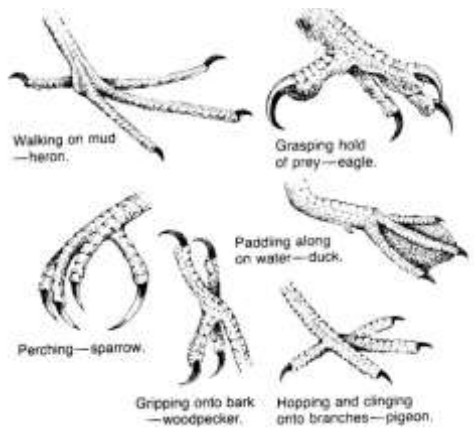
Gene Pool



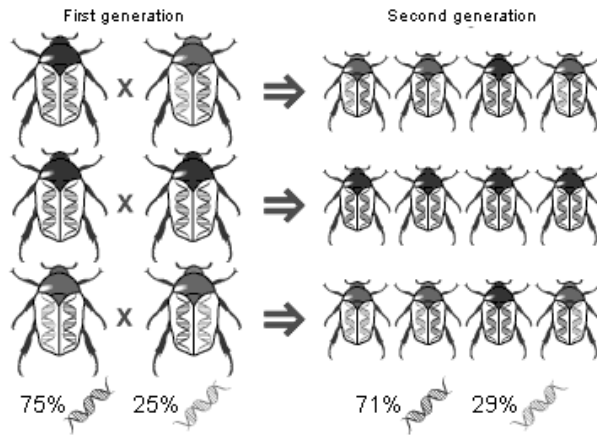
Gene Frequency



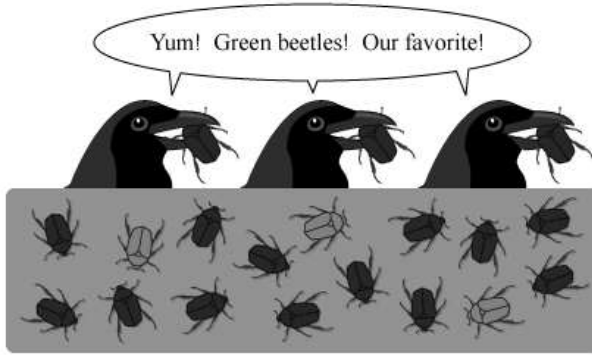
Adaptation



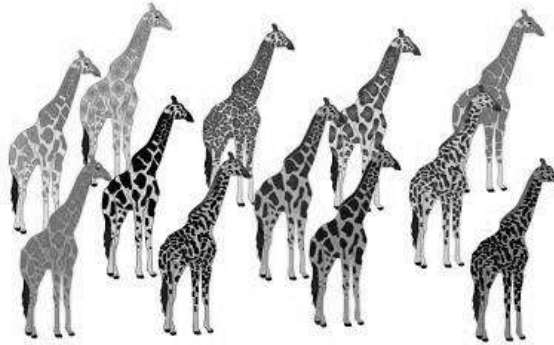
Evolution



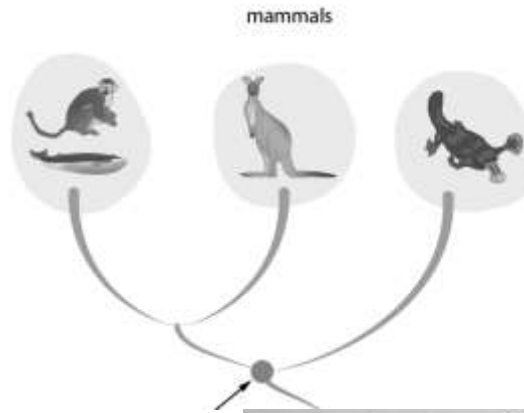
Selective Pressure



Genetic Variation



Common Ancestor



Isolation



Artificial Selection

