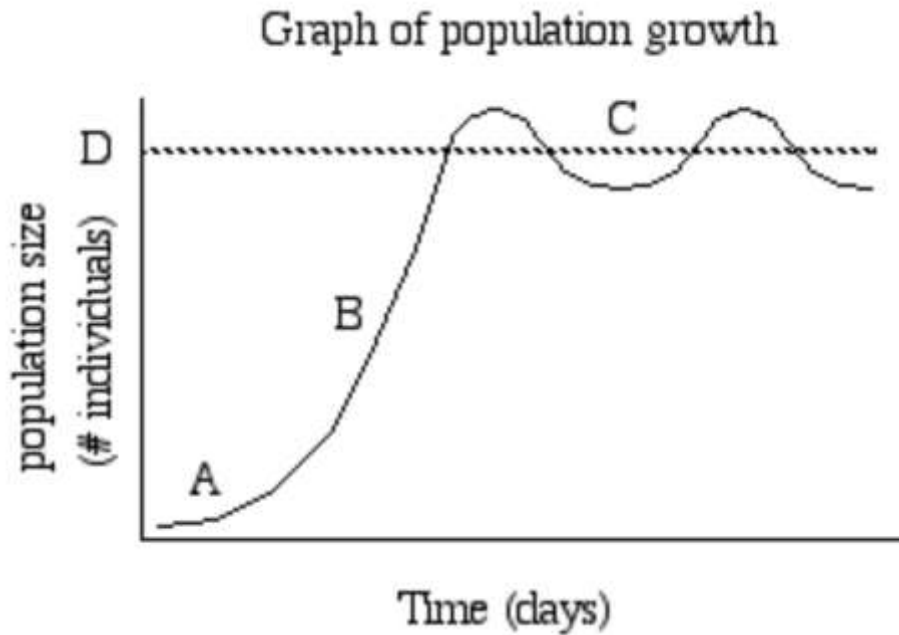


Ecology Notes Part 2 – Limiting Factors

Food webs and energy pyramids model _____

- They show how other organisms can _____

Typical _____ of a population:



A. Slow initial growth _____

B. **Exponential growth** _____

C. Growth rate slows _____

D. **Carrying Capacity** _____

Carrying capacity depends on _____

- Density- _____ :

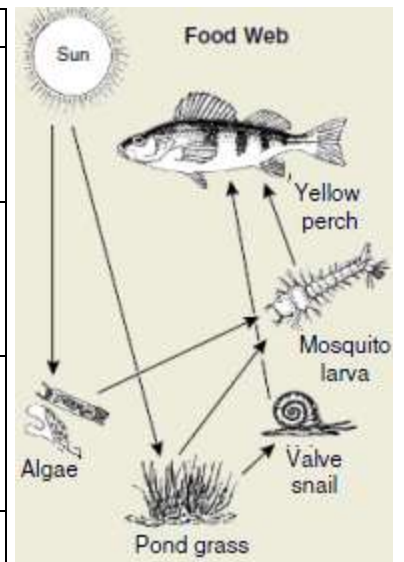
- Ex: _____

- Density- _____ :

- Ex: _____

Factors that can limit a species' population size:

Factor	Description	Example
Scarce resources		
Competition		
Predation		
Symbioses		



Symbiotic Relationships _____

Symbioses	Description	Effect on each species	Example(s)

Disturbance - _____

- Loss of _____

- Introduction of _____

- Changing _____
