

Classification Notes

Classification groups organisms according to

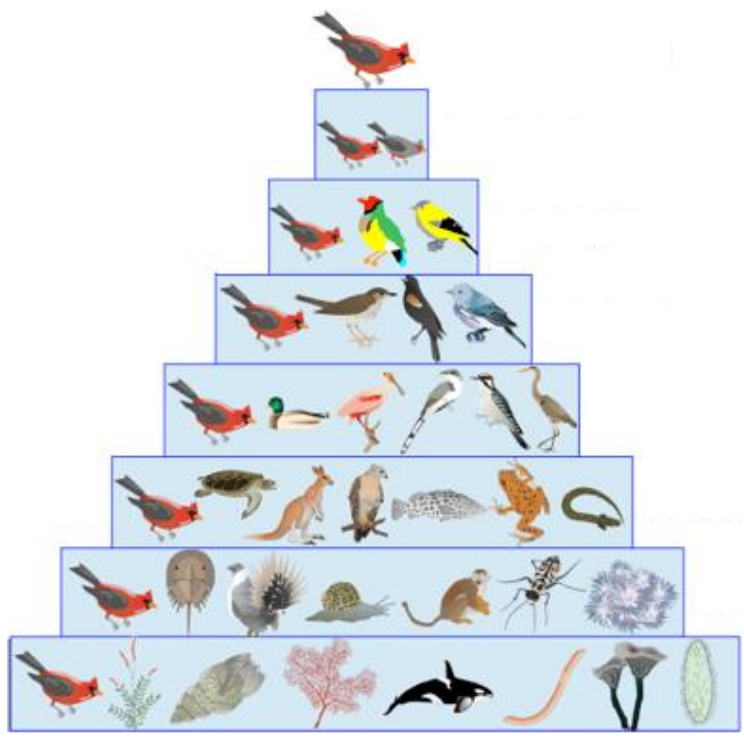
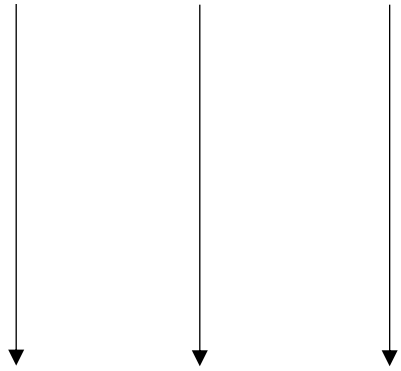
-
-

Classification tells us an organism's _____

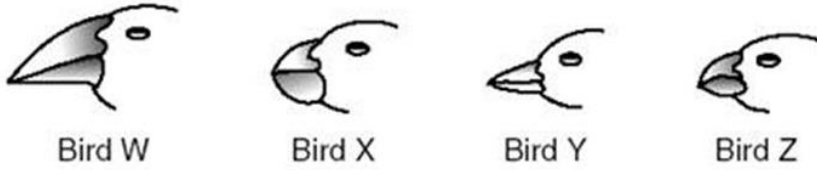
3 classification tools: _____

Taxonomy

- Invented by _____
- Organisms' scientific names: _____



Dichotomous Keys



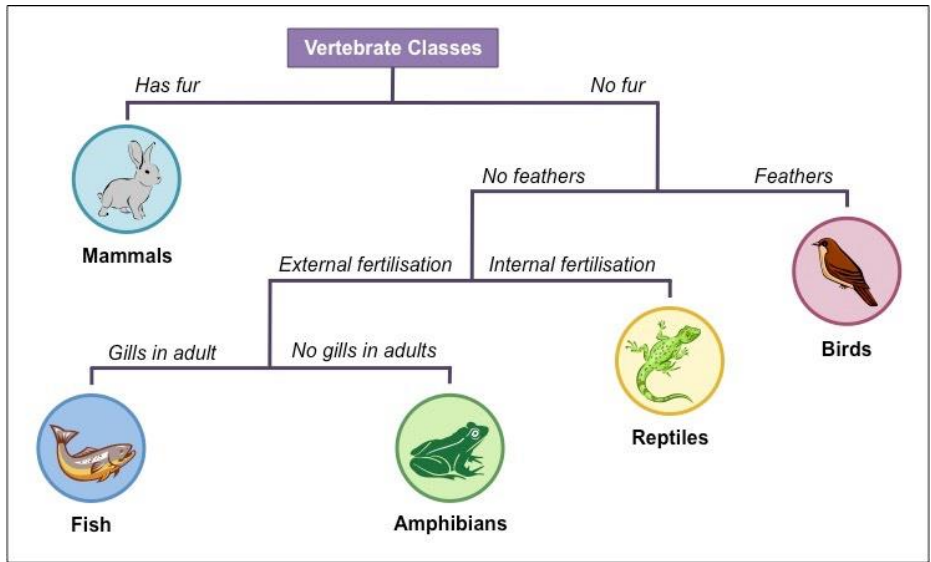
Bird W:

Bird X:

Bird Y:

Bird Z:

Dichotomous Key to Representative Birds	
1. a.	The beak is relatively long and slender..... <i>Certhidea</i>
b.	The beak is relatively stout and heavy.....go to 2
2. a.	The bottom surface of the lower beak is flat and straight <i>Geospiza</i>
b.	The bottom surface of the lower beak is curvedgo to 3
3. a.	The lower edge of the upper beak has a distinct bend <i>Camarhynchus</i>
b.	The lower edge of the upper beak is mostly flat <i>Platyspiza</i>



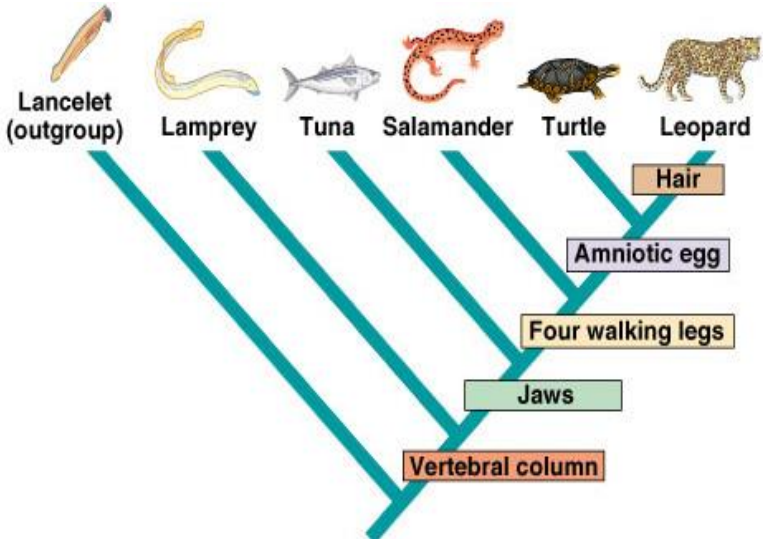
Difference between mammals and birds?

Difference between reptiles and amphibians?

Similarity between amphibians and fish?

Cladograms (Phylogenetic Trees)

- Shows an _____
- Based on _____



Which 2 are most closely related?

Which 4 have jaws?

Which 4 do NOT have an amniotic egg?

What is 1 difference between a lancelet and a lamprey?

What evolved first – jaws or 4 walking legs?